

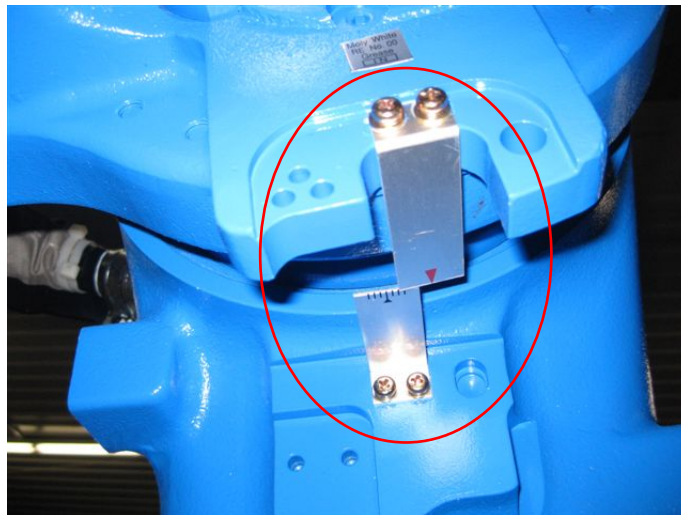


ROBOSUIT® INSTALLATION INSTRUCTIONS FOR THE MOTOMAN MH-50 SERIES ROBOT

PRIOR TO INSTALLING THE ROBOSUIT®, CLEAN THE ROBOT SURFACE IF THE ROBOT HAS BEEN IN OPERATION WITHOUT ANY EFFECTIVE PROTECTION. DISCONNECT ANYTHING THAT WILL INTERFERE WITH INSTALLATION.

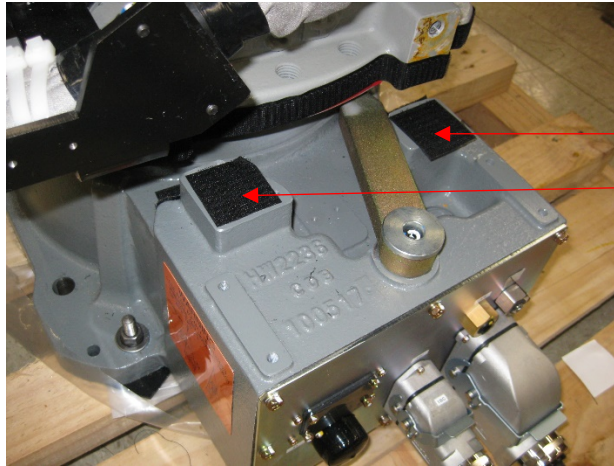
EACH SUIT IS MADE UP OF THREE (3) PIECES PLUS AN OPTIONAL SKIRT FOR THE BASE.

1. MOVE THE ARM TO ITS HOME POSITION.
2. OPEN ALL ZIPPERS AND VELCRO SEAMS AND REMOVE THE LIFTING EYE BOLTS. IN ADDITION, THE MH SERIES IS EQUIPPED WITH ALUMINUM INDEXING MARKS AT THE VARIOUS JOINTS. THESE MUST BE REMOVED SO TO AVOID DAMAGE TO THE ROBOSUIT®. BE CERTAIN TO REMOVE FROM ALL JOINTS.

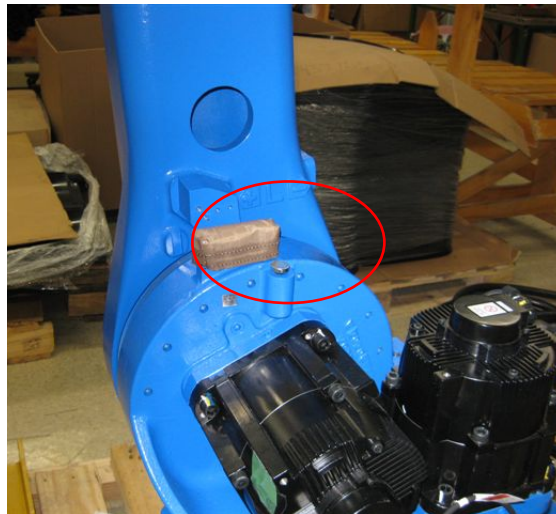


3. (IF PROVIDED--INSTALL THE ADHESIVE VELCRO PADS TO THE CASTING OF THE ROBOT, THEN INSTALL THE BASE SKIRT AROUND THE BASE AND SECURE THE VELCRO SEAM.)





4. INSTALL TEFLON CAP OVER J2 HARD STOP



5. INSTALL ADHESIVE BACKED VELCRO STRIP AROUND AXIS 1 CASTING.



6. INSTALL THE LOWER ARM PIECE. THIS IS THE LARGEST PIECE, AND FEATURES A NYLON BELT. JOG J3 FORWARD TO FACILITATE INSTALLATION. CLOSE THE ZIPPERS AND VELCRO SEAMS. TIGHTEN THE NYLON BECKLE BELT AROUND THE BASE. MAKE SURE THERE IS NO EXCESS BELT MATERIAL HANGING FROM THE SUIT. BE CERTAIN TO MATCH THE VELCO (INSIDE LOWER ARM COVER) WITH VELCRO STRIP ATTACHED TO THE J1 CASTING.
7. INSTALL THE SHOULDER (WITH THE CABLE COVER JOINT IN PLACE) AND POSITION IT SO THAT IT OVERLAPS THE MATCHING JOINT ON THE LOWER ARM. MAKE SURE THE JOINT 3 COLLAR OVERLAPS THE LOWER ARM PIECE. USE THE YELLOW NYLON "LENS" AS GUIDES. CLOSE ZIPPERS AND VELCRO SEAMS. NOTE: CONNECTIONS TO THE ROBOT CAN BE MADE THROUGH THE VELCRO ATTACHED PANELS. MAKE "CROSSHAIR" CUTS INTO EACH PANEL (AS YOUR NEEDS DICTATE) SO TO MOUNT DRESS-PACK ITEMS.
8. INSTALL THE UPPER ARM/WRIST PIECE ORIENTING THE VELCRO (OR ZIPPER) ALONG THE BOTTOM OF THE UPPER ARM. ALIGN AND CLOSE ALL VELCRO SEAMS. ZIPPER THE LINEAR PART OF THE ARM TO OVERLAP THE SHOULDER CUFF. DO NOT CLAMP THE (OVERLAPPING MATERIAL) CUFFS. CLAMP 3-4-INCHES IN FRONT OF THE J4 CUFF. IF DESIRED, PLACE A SECOND CLAMP BEHIND THE J6 TOOL FLANGE.
9. SLOWLY MOVE THE ROBOT ARM TO CHECK FOR FIT AND OBSTRUCTIONS.

SHOULD YOU HAVE ANY QUESTIONS, PLEASE CONTACT ROBOWORLD AT 216.798.5839 OR 513.633.2585

