

ROBOSUIT® INSTALLATION INSTRUCTIONS FOR THE MOTOMAN GP SERIES ROBOTS

PRIOR TO INSTALLING THE ROBOSUIT®, CLEAN THE ROBOT SURFACE IF THE ROBOT HAS BEEN IN OPERATION WITHOUT ANY EFFECTIVE PROTECTION. THE ROBOSUIT® IS DESIGNED TO FIT A BARE ROBOT (AS SHIPPED FROM YASKAWA). DISCONNECT ANYTHING THAT WILL INTERFERE WITH INSTALLATION SUCH AS JUNCTION BOXES, BRACKETS, STANDOFFS, ETC. THESE WILL BE REINSTALLED ONCE THE ROBOT IS SUITED. REMOVE THE LIFTING EYE BOLTS.

EACH SUIT IS MADE UP OF THREE (3) PIECES PLUS AN OPTIONAL SKIRT FOR THE BASE.

1. MOVE THE ARM TO ITS HOME POSITION AS SHOWN BELOW.



EXAMPLE OF "HOME" POSITION

2. OPEN ALL ZIPPERS AND VELCRO SEAMS. THE GP SERIES IS EQUIPPED WITH ALUMINUM INDEXING MARKS AT THE VARIOUS JOINTS. **THESE MUST BE REMOVED TO AVOID DAMAGE TO THE ROBOSUIT®.** BE CERTAIN TO REMOVE FROM ALL JOINTS.



Axis 4



AXIS 1

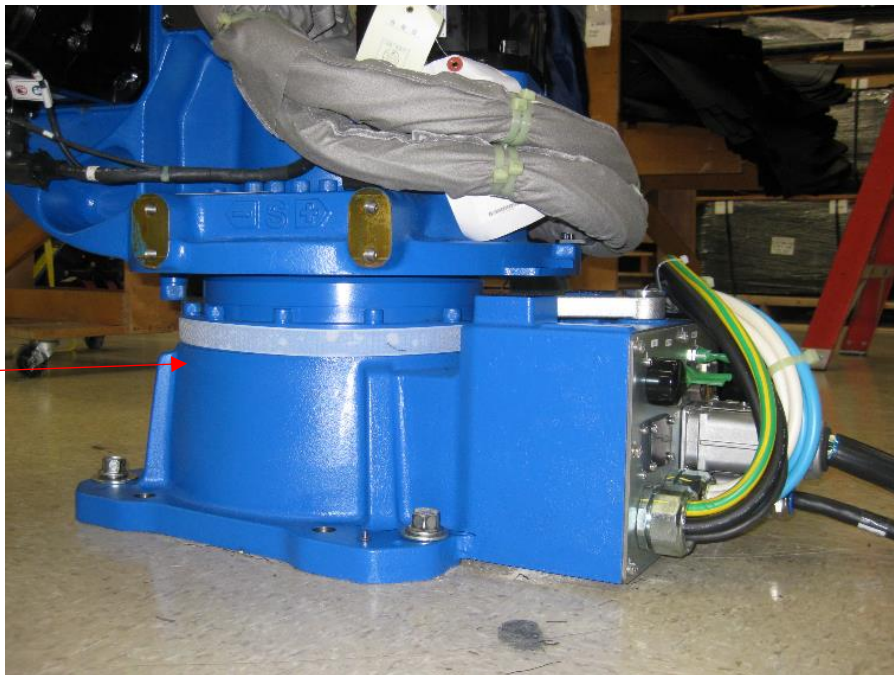


AXIS 6

3. INSTALL THE TEFLON J1 MOTOR COVER



4. IF YOU PURCHASED THE BASE COVER, INSTALL THE ADHESIVE VELCRO TO THE CASTING OF THE ROBOT, THEN INSTALL THE BASE SKIRT AROUND THE BASE AND CLOSE THE VELCRO SEAM. THE MATING ADHESIVE VELCRO PATCHES WILL BE ATTACHED TO THE INSIDE OF THE ROBOSUIT WHEN SHIPPED. REMOVE FROM ROBOSUIT FOR INSTALLATION ON THE ROBOT.



5. INSTALL THE LOWER ARM PIECE. THIS IS THE LARGEST PIECE, AND FEATURES A NYLON BELT. OPEN THE J3 RING AND WRAP AROUND J3. WRAP THE BODY AND INTERNAL BELT AROUND THE J2 MOTOR. WRAP

INTERNAL BELT AROUND LOWER ARM CASTING TO SECURE LOWER ARM COVER IN PLACE. CLOSE THE ZIPPERS AND VELCRO SEAMS. TIGHTEN THE NYLON BECKLE BELT AROUND THE BASE. TRIM ANY EXCESS BELT MATERIAL HANGING FROM THE SUIT.

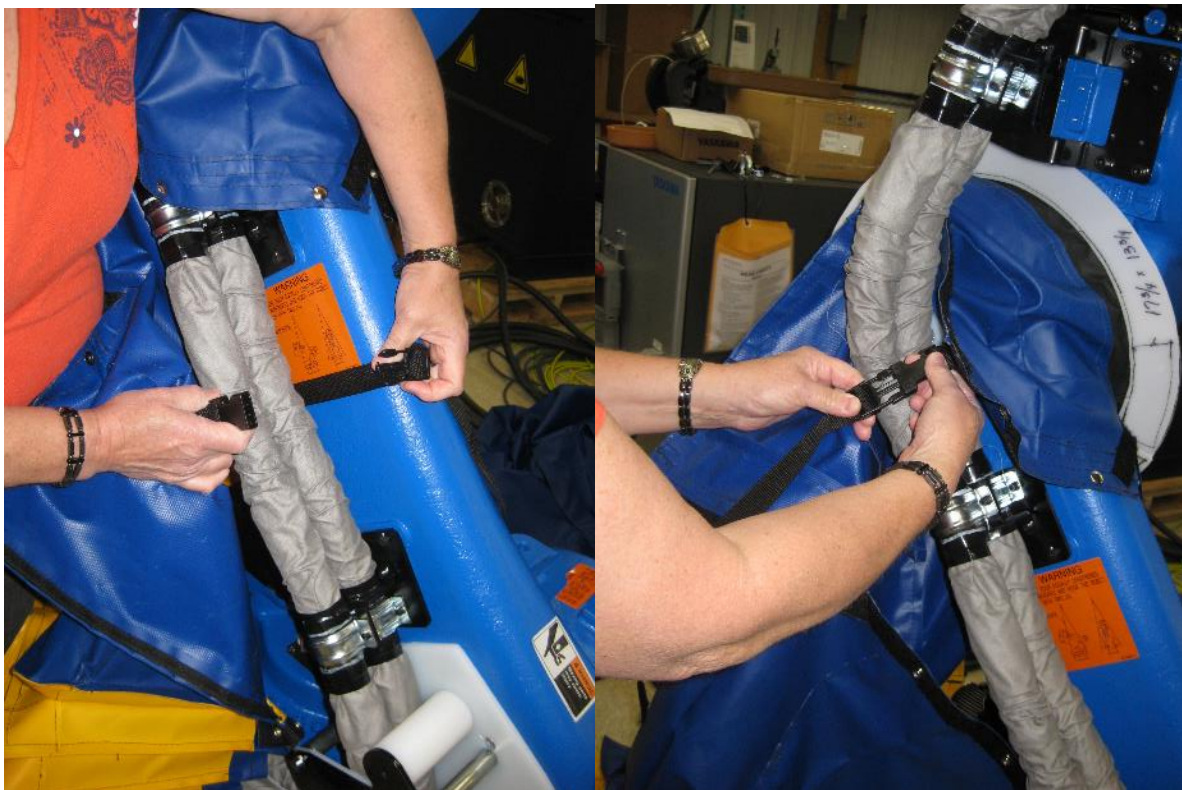


J3 RING

J2 MOTOR



J2 MOTOR
BELT



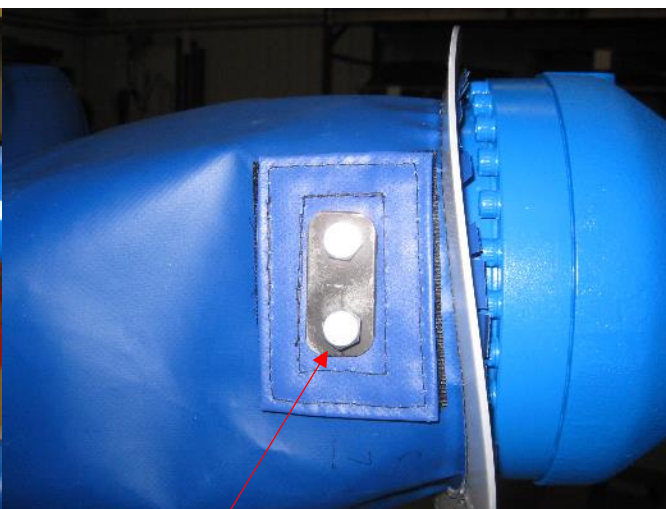
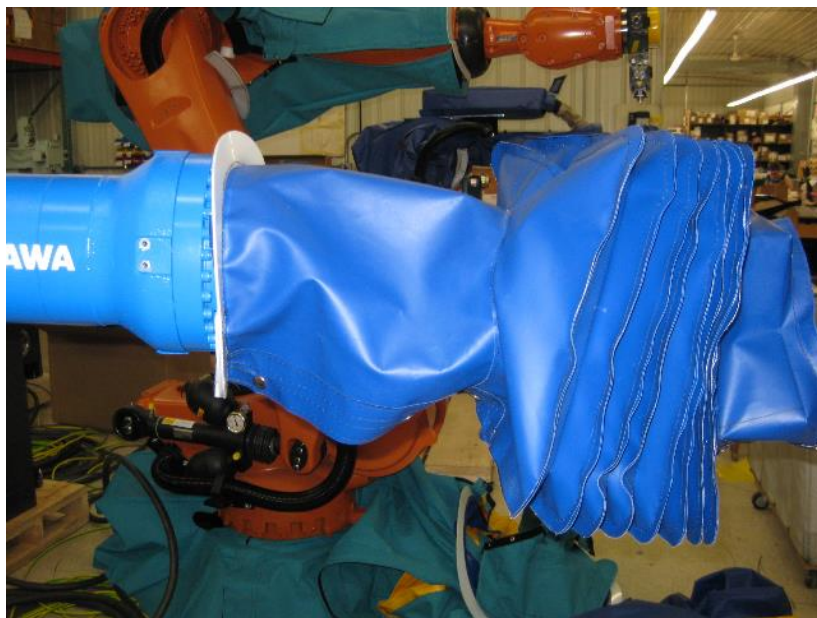
INTERNAL BELT ON LOWER ARM ROBOSUIT



PROPER POSITION OF J3 RING ONCE INSTALLED (LEFT)

CUT SLIT IN GUM-RUMMER PORT ON UNDERSIDE OF LOWER ARM AND PUSH HARD-STOP FINGER THROUGH

6. INSTALL THE UPPER ARM/WRIST PIECE. THE J4 RING FACES THE SHOULDER. ORIENT THE VELCRO (OR ZIPPER) ALONG THE BOTTOM OF UPPER ARM. ALIGN AND CLOSE ALL VELCRO SEAMS. ROTATE THE WRIST TO ALIGN THE MOUNTING PAD WITH THE OEM BOLT HOLES AND SECURE IN PLACE WITH BRACKET.



7. INSTALL THE SHOULDER (WITH THE CABLE COVER JOINT IN PLACE) AND POSITION IT SO THAT IT OVERLAPS BOTH THE J3 AND J4 RINGS. CLOSE ZIPPERS AND VELCRO SEAMS. NOTE: CONNECTIONS TO THE ROBOT CAN BE MADE THROUGH THE VELCRO ACCESS PANELS.



8. SLOWLY MOVE THE ROBOT ARM TO CHECK FOR FIT AND OBSTRUCTIONS. AT THIS TIME, YOU CAN MAKE "CUTS" INTO THE VELCRO PANELS IN ORDER TO ATTACH/MOUNT DRESS-PACK ITEMS. PUSH THE COVER AT J6 (TOOL FLANGE) BACK AWAY FROM ROTATING FLANGE AND INSTALL CLAMP. DO NOT CLAMP TO ROTATING FLANGE OR TWISTING OF THE WRIST PIECE WILL OCCUR.





IF YOU HAVE ANY QUESTIONS, PLEASE CONTACT ROBOWORLD AT 216.798.5839 OR 513.633.2585