



ROBOSUIT® INSTALLATION INSTRUCTIONS FOR UNIVERSAL ROBOTS UR5E, UR10E, AND UR16E:

MOVE ROBOT TO “HOME” POSITION AND CLEAN SURFACES PRIOR TO INSTALLATION.

ARRANGE THE COMPONENTS IN THE ORDER SHOWN ON PAGE-2. YOU WILL FIND THE COMPONENT NAMES WRITTEN ON TAGS SEWN TO THE INSIDE OF EACH PIECE. INSTALLATION WILL BEGIN AT J6.

NOTE: THIS SUIT DOES NOT SLIDE OVER THE ARM. EACH PIECE WRAPS *AROUND* INDIVIDUAL ROBOT SECTIONS AND THEN CLOSES. SNUGNESS/SLACK MAY BE ADJUSTED BY VARYING THE DEGREE OF VELCRO OVERLAP.

INSTALLATION SEQUENCE:

1. INSTALL THE TOOL END WITH THE WHITE PLASTIC RING FACING UPWARDS. SLICE THE GUM RUBBER CIRCLE IF PASSING A CABLE CONNECTION THROUGH THE SUIT TO THE CANNON PLUG
2. INSTALL THE WRIST WITH THE WHITE RING FACING TOOL-FLANGE RING FROM STEP-1
3. MATE THE ADJOINING RINGS AT J6 AND INSTALL THE J6 RING RETAINER
4. INSTALL THE SHOULDER. OVERLAP THE WRIST FABRIC WITH FABRIC CUFF ON THE SHOULDER
5. INSTALL THE UPPER ARM
6. MATE THE ADJOINING RINGS AT J4 AND INSTALL THE J4 RING RETAINER
7. INSTALL THE LOWER ARM
8. MATE THE ADJOINING RINGS AT J3 AND INSTALL THE J3 RING RETAINER
9. SEPERATE THE ADHESIVE BACKED VELCRO TAPE FROM THE MOUNTING BASE (IMAGE-2). DO NOT REMOVE PAPER BACKING UNTIL READY TO ADHERE TAPE TO ROBOT). INSTALL VELCRO TAPE AROUND BASE CIRCUMFERENCE NOTED ON IMAGE-3. ORIENT THE COVER SO THE NOTCH AT BOTTOM ALIGNS WITH THE ROBOT POWER CABLE. INSTALL COVER AND PRESS BOTTOM TO MATE WITH VELCRO TAPE
10. INSTALL THE BASE COVER OVERLAPPING THE TEFLON ON THE MOUNTING BASE
11. MATE THE ADJOINING RINGS AT J2 AND INSTALL THE J2 RING RETAINER
12. MOVE THE ROBOT SLOWLY THROUGH ITS INTENDED WORK ENVELOPE TO ENSURE DEXTERITY AND FIT. MAKE ANY ADJUSTMENTS TO SUIT TENSION BY ADJUSTING VELCRO OVERLAPS (IF NEEDED). VALIDATE FIT/FUNCTION AT FULL SPEED
13. INSTALLATION IS COMPLETE

UR5E, UR10E, UR16E Robosuit® Components (11-pc):



Note: J6 ring retainer has the smallest diameter. J2 and J3 rings are the same size and have the largest diameters. J4 ring retainer remains by default.



Image-2

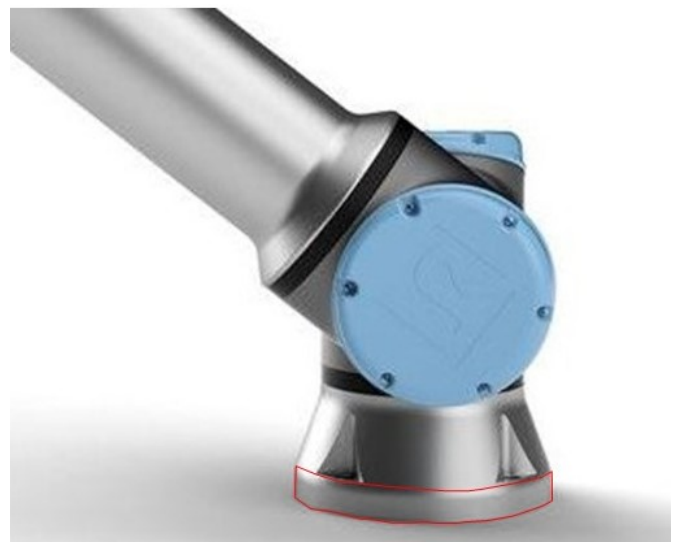


Image-3